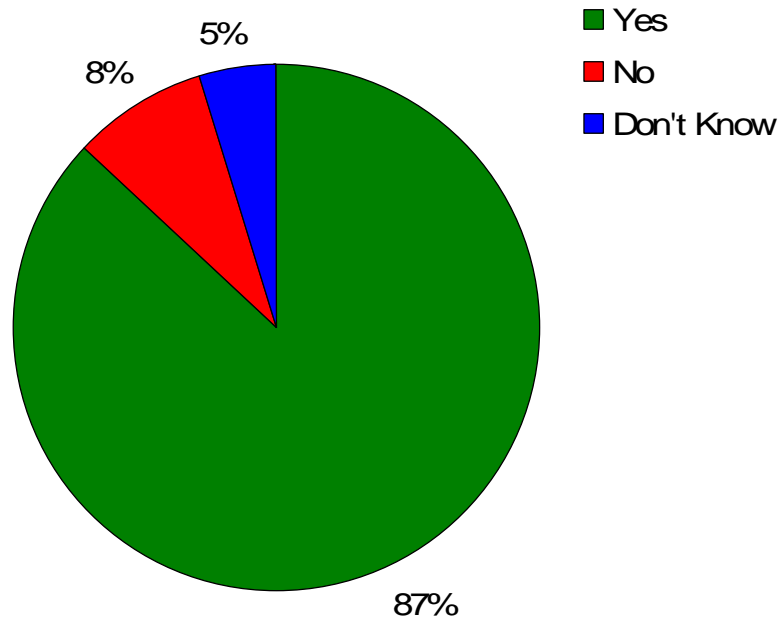
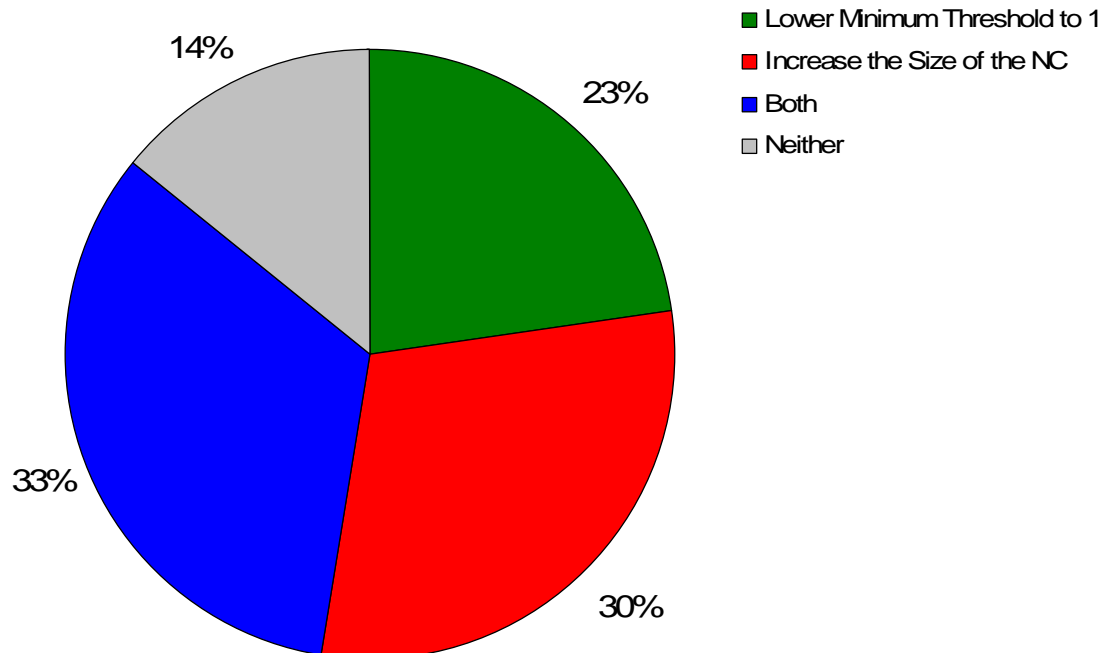


Should a higher percentage of delegates be chosen based on some measure of Proportional strength?
(N= 108)

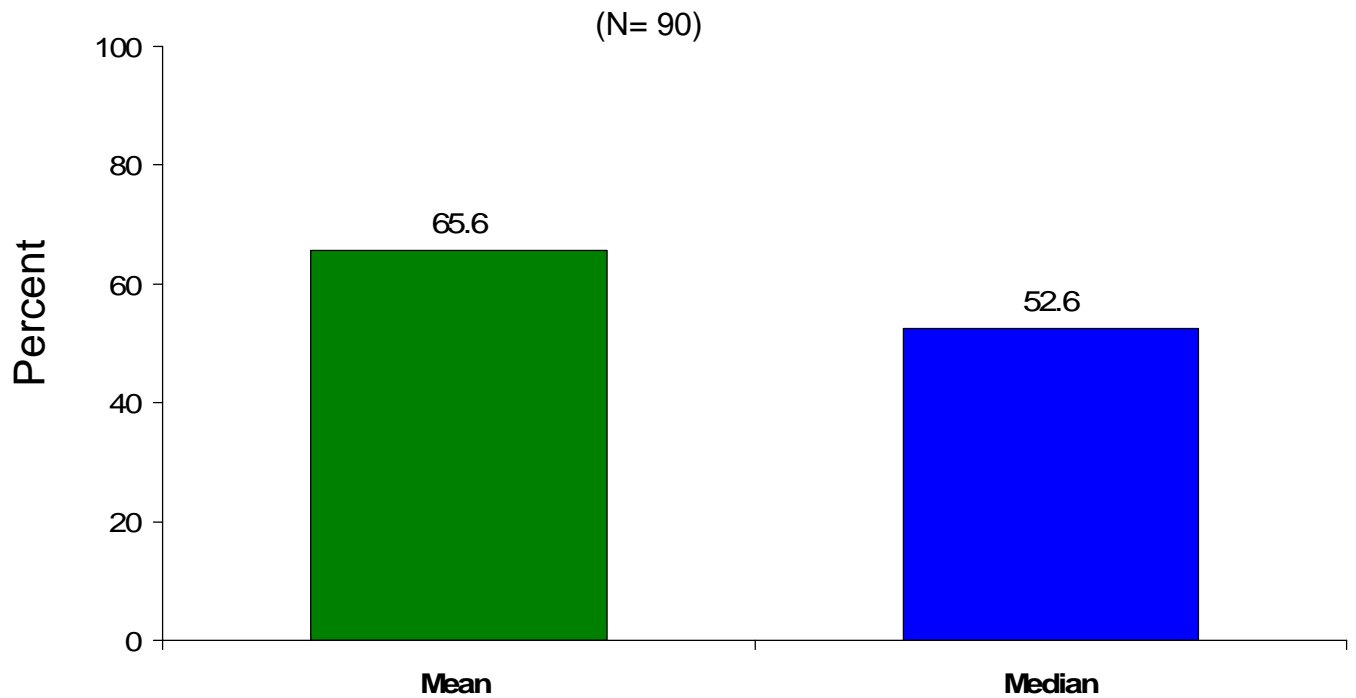


How should the NC increase the number of delegates chosen by some measure of proportional strength
(N= 105)

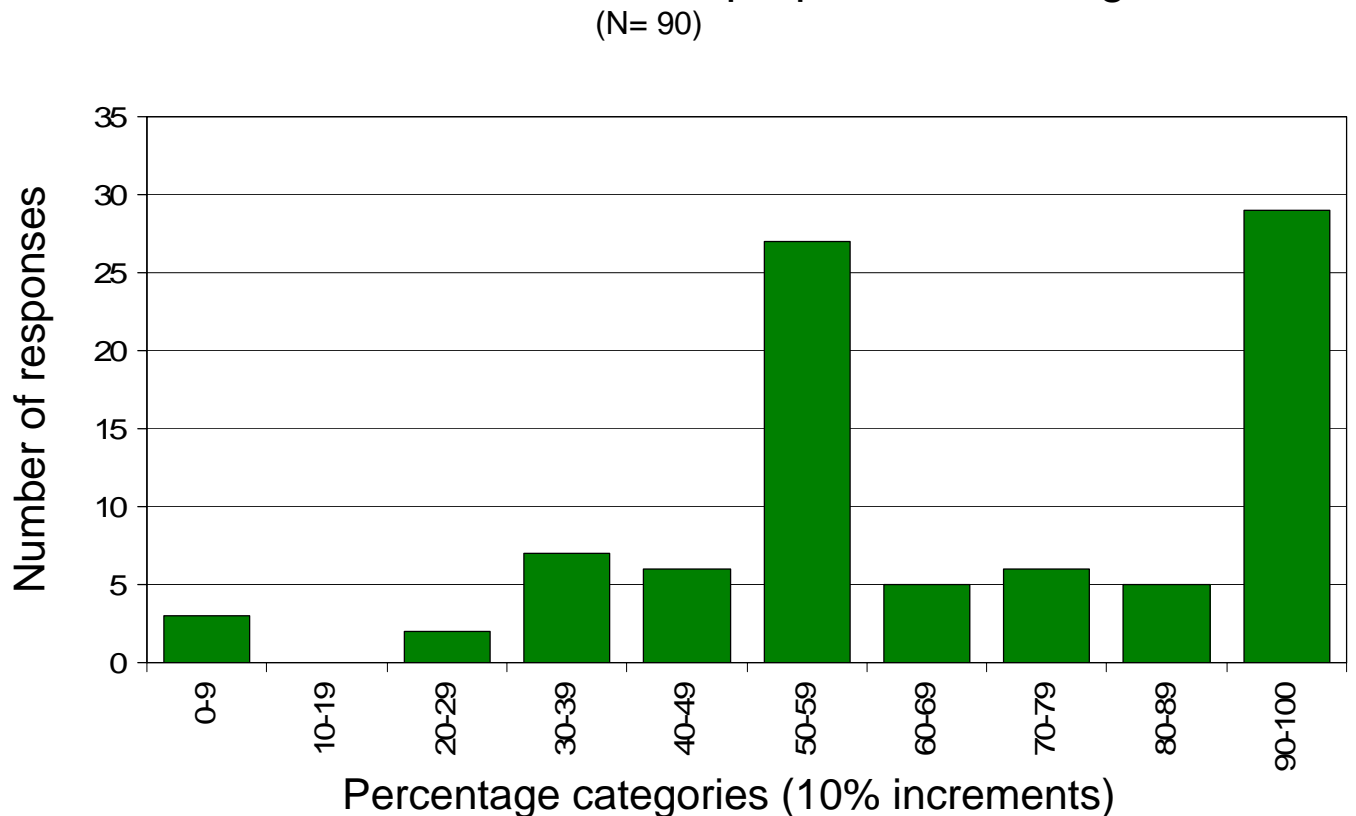


56% support lowering the threshold to 1 delegate
63% support increasing the size of the NC

Percentage of delegates to the NC that should be allocated based on some measure of proportional Strength

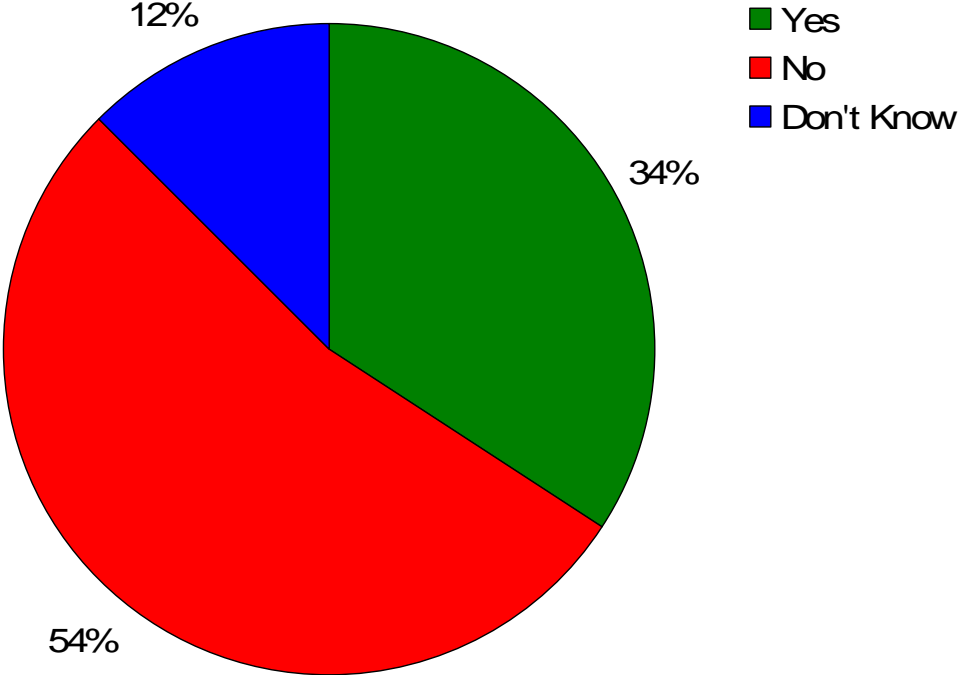


Distribution of proposed percentages of delegates allocated based on some measure of proportional strength



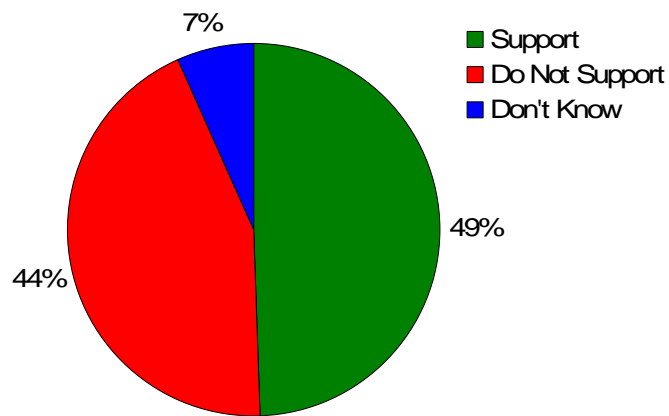
Should the NC change to a regional system for allocating delegates to improve proportionality and great representation by women and minorities?

(N= 105)



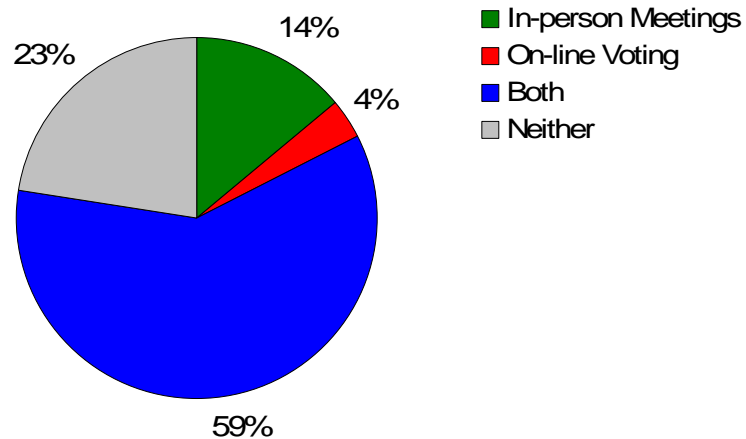
Should the NC allow weighted or proxy voting where a state gets more votes than the number of delegates?

(N = 107)



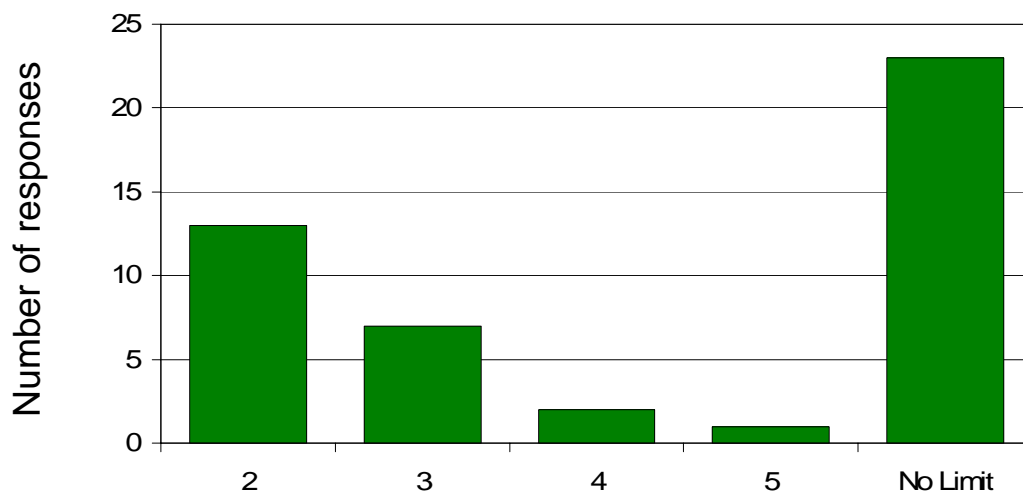
Under what conditions should proxy voting be allowed?

(N = 80)



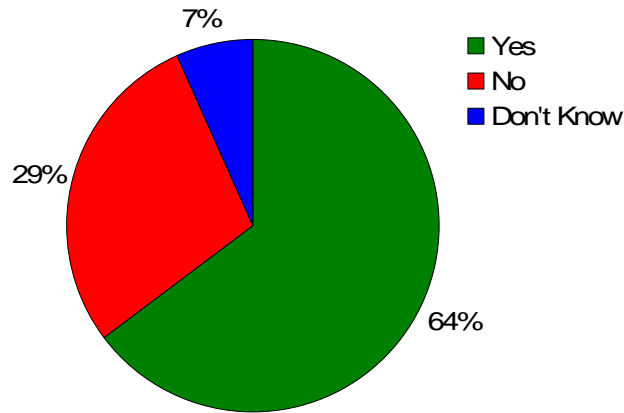
What is the maximum number of proxy votes one delegate should be allowed to cast?

(N = 46)



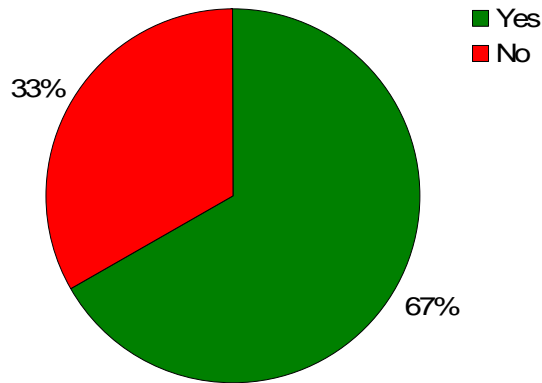
Should the NC allow states to use fractional voting if it doesn't affect the overall vote proportionality?

(N = 105)



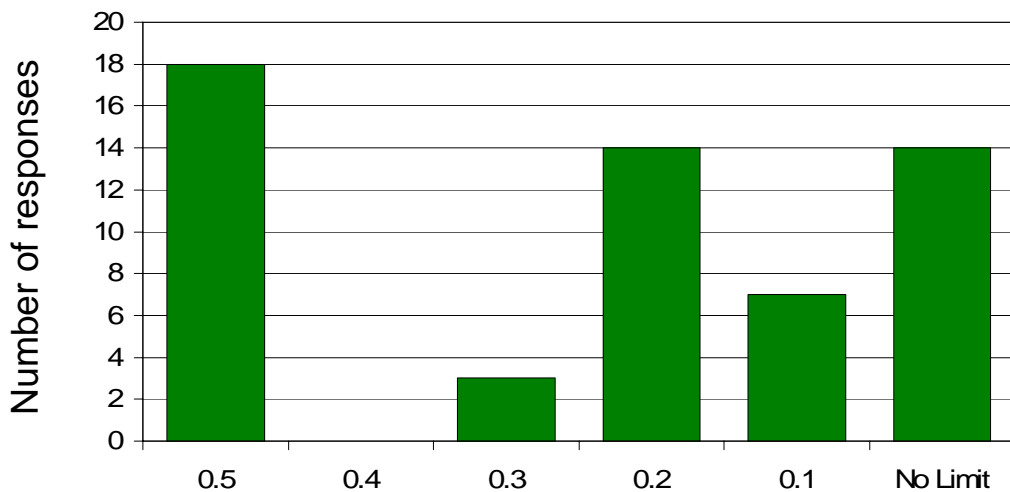
Should the NC allow states to have more delegates than votes to increase participation?

(N = 69)



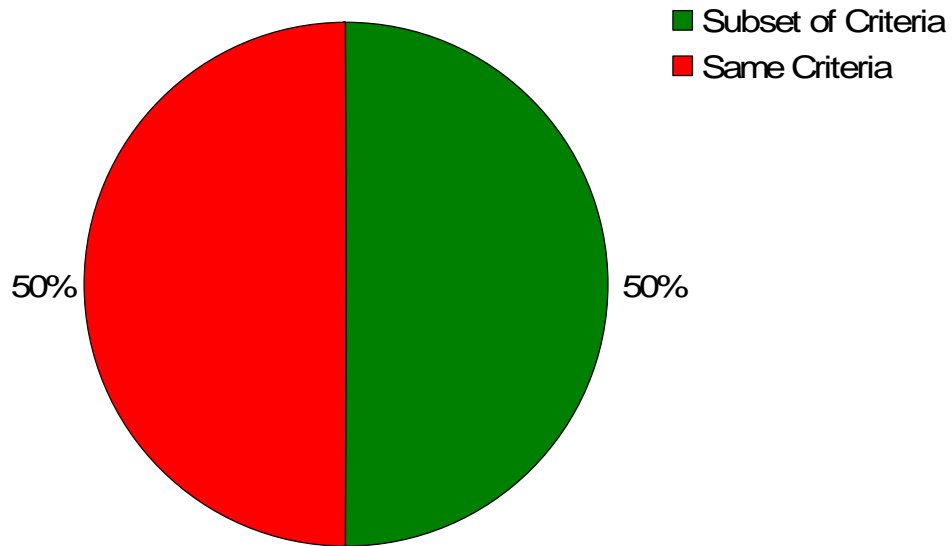
What is the limit on how small a vote can be split?

(N = 56)

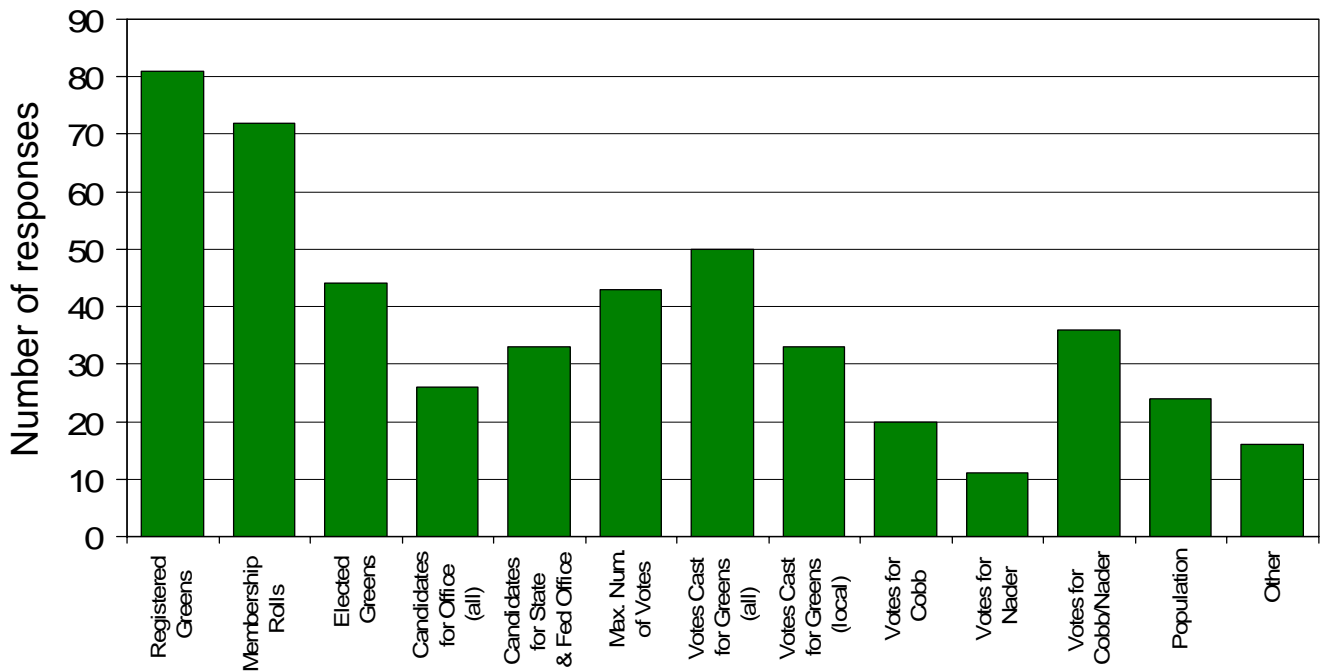


Should states be allowed to use a subset of criteria to determine their proportional strength or should all states have to use the same criteria?

(N= 102)

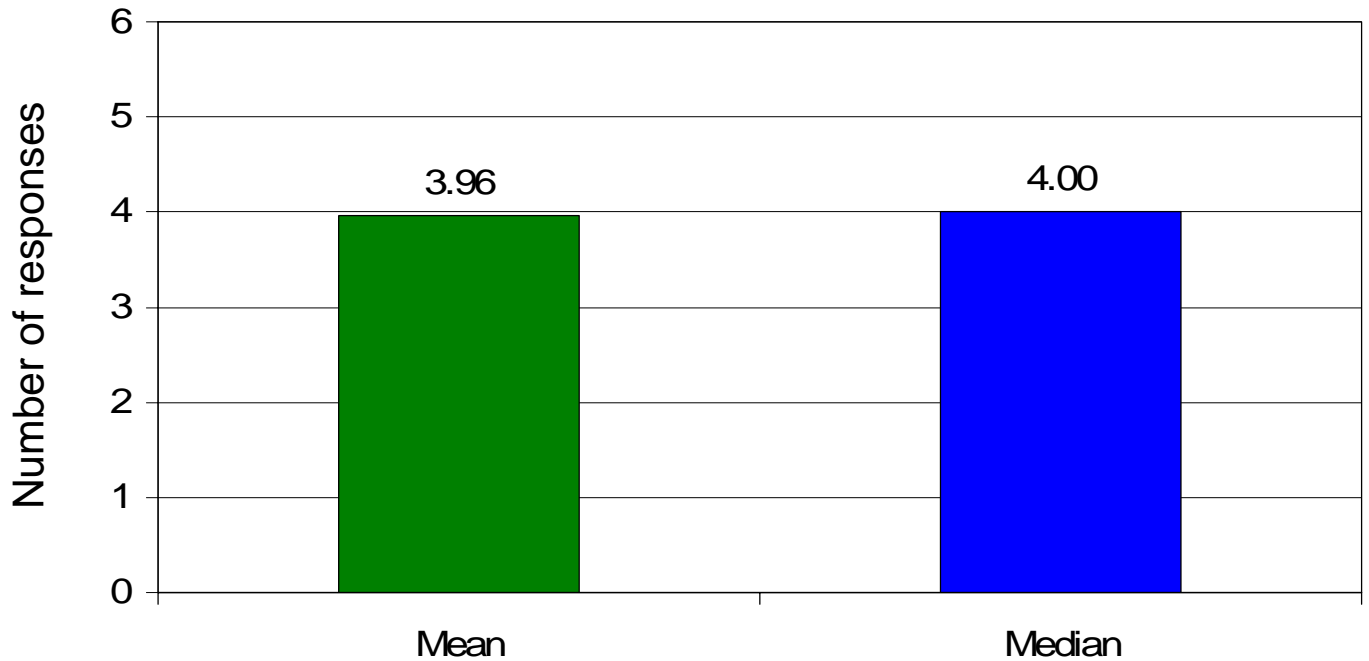


Support for various criteria to determine proportional strength



Number of criteria that should be used to determine proportional strength of each state

(N= 36)



How often should the NC recalculate the allocation of delegates to states?

(N= 97)

